









Women's Heavy Polo Longsleeve

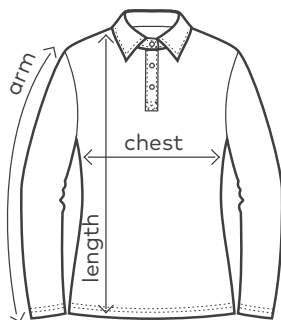


colours:

-  white
 -  black
 -  steel grey *new*
 -  fire red
 -  navy
-     

4605 | XS-3XL | 220 g/m² | 100 % cotton

Timeless longsleeve piqué polo with high-quality finished button panel and 3 tone-in-tone buttons as well as side slits, produced of combed cotton. The polo has a modern cut.



	XS	S	M	L	XL	XXL	3XL
chest	40	43	46	49	53	56	
length	59	62	65	68	71	73	
arm	60	61	62	62	62	62	

Sizes and weights + /- 5%. Subject to amendment.